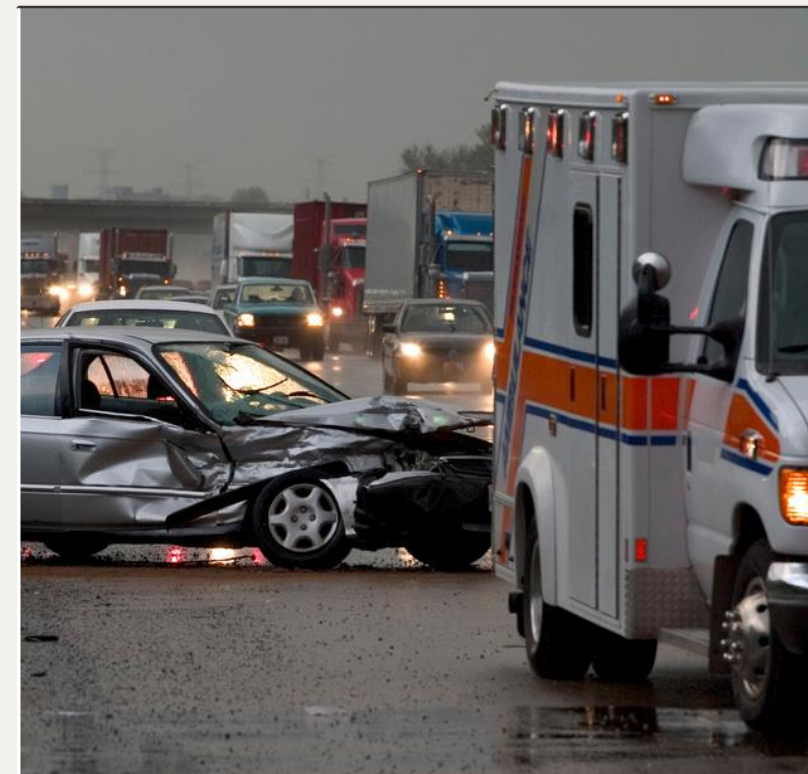




HANDLE



WITH

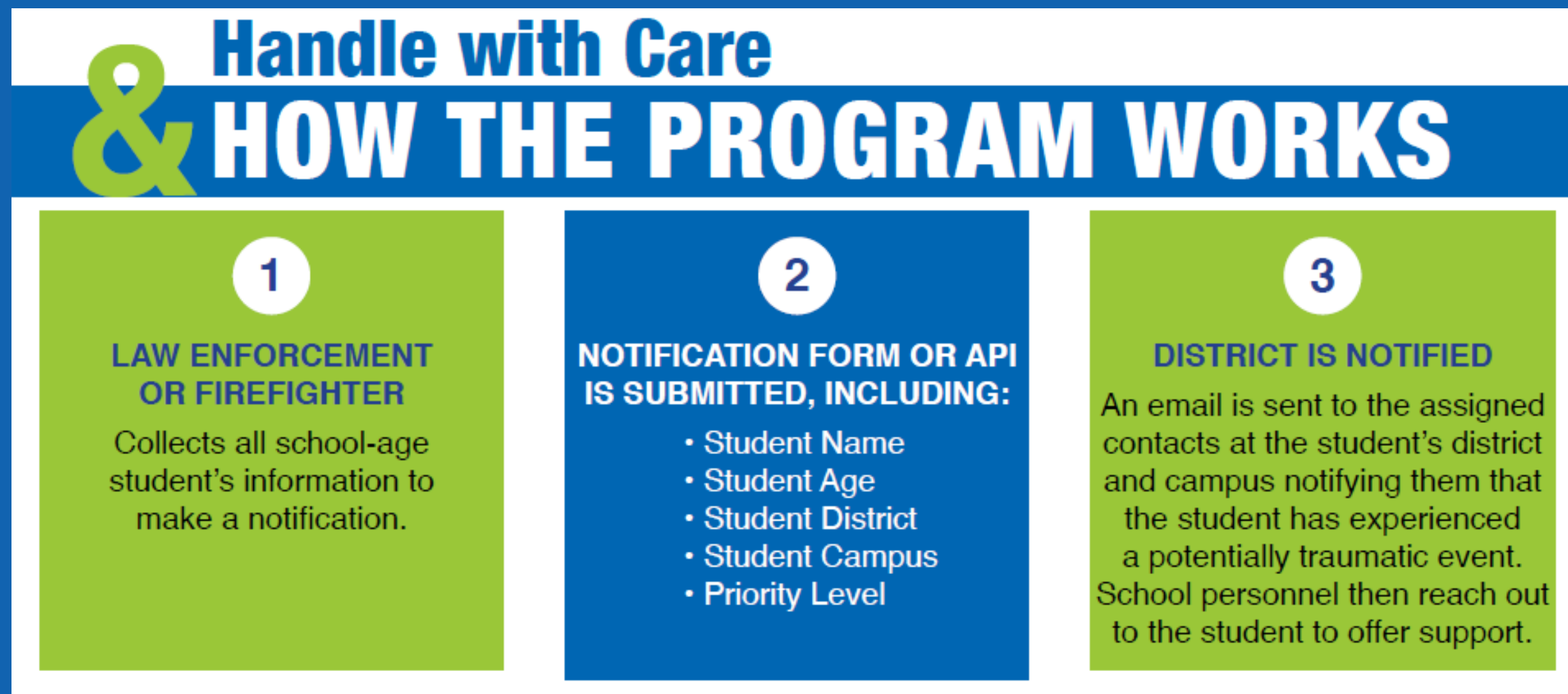


CARE



What is Handle with Care?

Handle with Care is a collaborative partnership between first responders and local education agencies put in place to mitigate the negative effects of trauma exposure.





The History of Handle with Care

Handle with Care was initially piloted in Charleston, West Virginia in 2013 at Mary C. Snow West Side Elementary School. The campus served approximately 500 students, 93% of whom were from low-income families, and was located in a community plagued by drug and violent crime.

After some hurdles with implementation, Handle With Care became a magnet to assist agencies in working together, building community trust, and, most importantly, helping children struggling with the effects of trauma. School interventions were enough to help 90% of the identified children and teachers were better able to address issues in the classroom. Additionally, the relationship between education and Law Enforcement greatly improved.

Handle with Care has now been written into law by 5 states.



The WHY

First responders encounter children at traumatic scenes everyday.

Trauma exposure in children can initiate strong emotions and physiological reactions that can persist long after the event. These reactions can lead to learning difficulties and behavioral deficits. Being a victim of or witnessing violence increases the risk of perpetuating violence or becoming a victim of violence in the future.

First responders are able to provide intervention at the scene, but oftentimes, that is where the intervention stops. Handle with Care is there to bridge the gap.



Making the Notification

First responders simply click a link on their device that is unique to their department. This will allow them to select the student's district, campus, and enter the student's name and age. After clicking "Save", the notification will be sent to the district with the message "Handle with Care".

Who Receives the Notification?

It is at the district's discretion as to who will have access to the Hand with Care dashboard and who shall receive and disseminate the notifications.



Handle with Care

Message

The student referenced was at the scene of an incident in the last 24 hours that first responders identified as traumatic. As a result, the student may experience emotional, social, behavioral, or academic effects. Please handle this student with care.

District: TEST ISD

Campus: TEST H S

Student: TEST STUDENT

Age: 14

Police Department: FORT WORTH POLICE DEPARTMENT

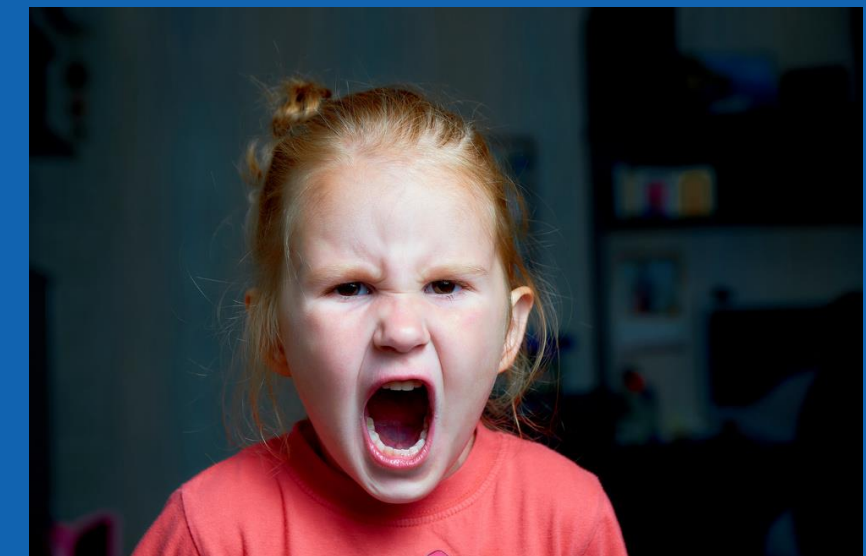


The Effects of Adverse Childhood Experiences

A traumatized student sees the world as a dangerous place, including school. Unfortunately, many adopt behavioral coping mechanisms that can frustrate educators such as:



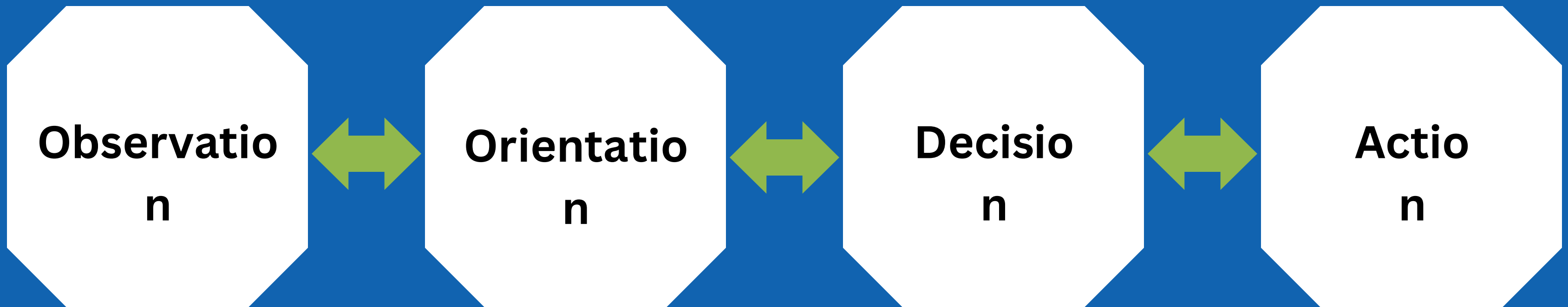
- Aggression
- Defiance
- Withdrawal
- Reactivity & Impulsivity
- Perfectionism





How HwC Helps Schools Respond

Through situational awareness, campuses can better serve students exposed to trauma.





Responding to a HwC Message

Watchful Waiting

All students perceive situations and process trauma differently. Some may need support, some may not.

Meet Their Needs

Hungry? Let them snack!
Sleeping? Let them sleep!
Offer more grace when behaviors arise.

Connect to Resources

Refer to the counselor or social worker.

If the student opens up, reach out to the parent with community resources, when appropriate.

Remain Proactive

Don't press the student for information regarding the incident. Handle with Care is not meant to be reactive.

****Always respect the dignity and privacy of the student****



What Does it Cost?

The Handle with Care program application is hosted by ESC Region 11 and is provided to agencies and districts at no cost. At least one program administrator is required to access the dashboard and keep notification contacts updated.



Handle with Care In Summary

- Identifies students exposed to trauma
- Provides the campus with a heads up
- Connects children with accessible services, if needed
- Strengthens and improves relationships in the community

Interested?



Thank you



Brittany Cronin

bcronin@esc11.net

t



Bradley Berry

bberry@esc11.net

817-740-7725

Copyright Notice:

All rights reserved: This material may not be reproduced or distributed without the express written permission of the Education Service Center Region 11.